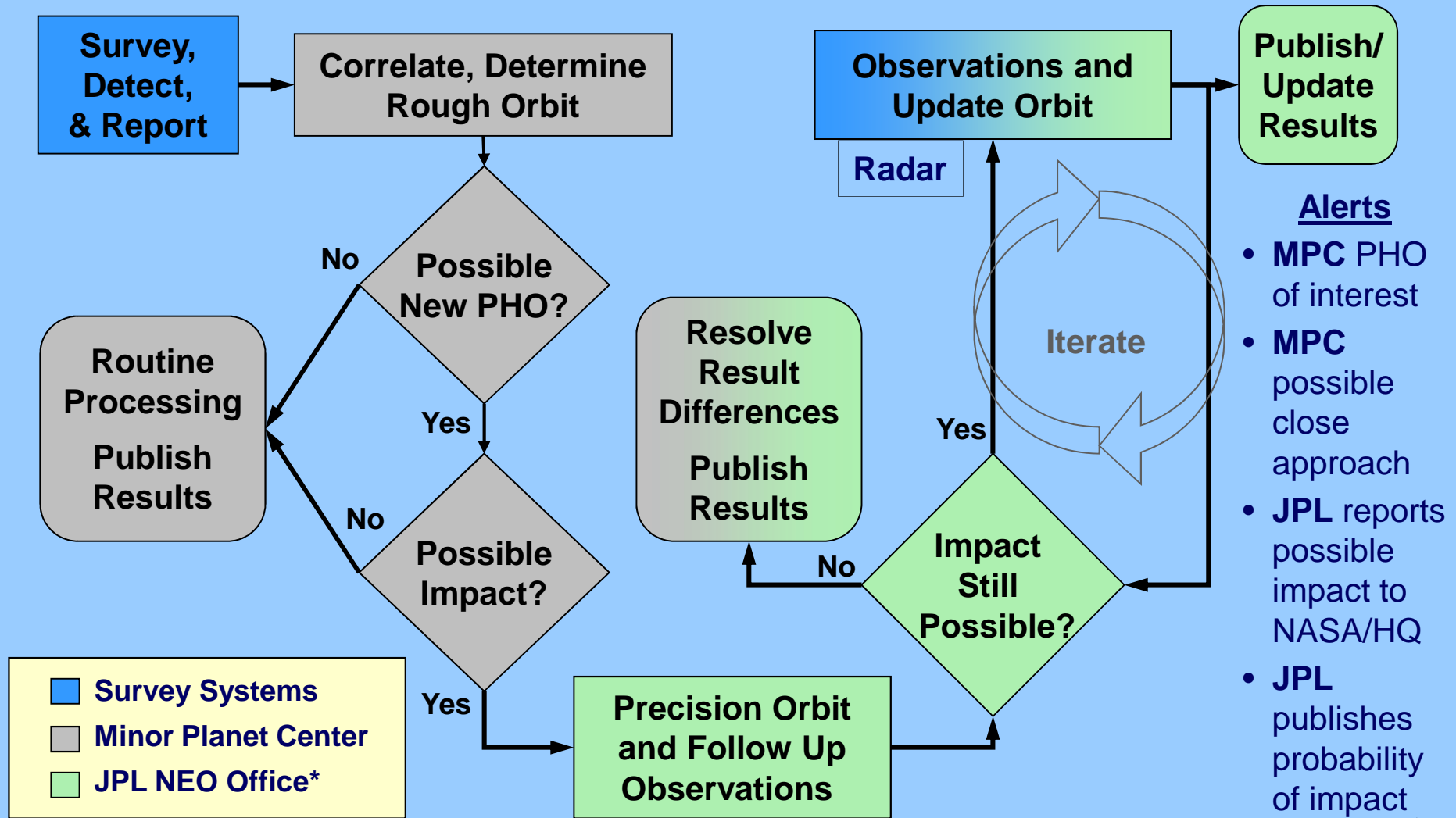
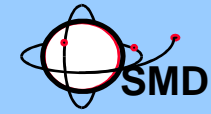




# Spaceguard Survey Catalog Program

## Current Spaceguard Survey Infrastructure and Process



\* In parallel with NEODyS

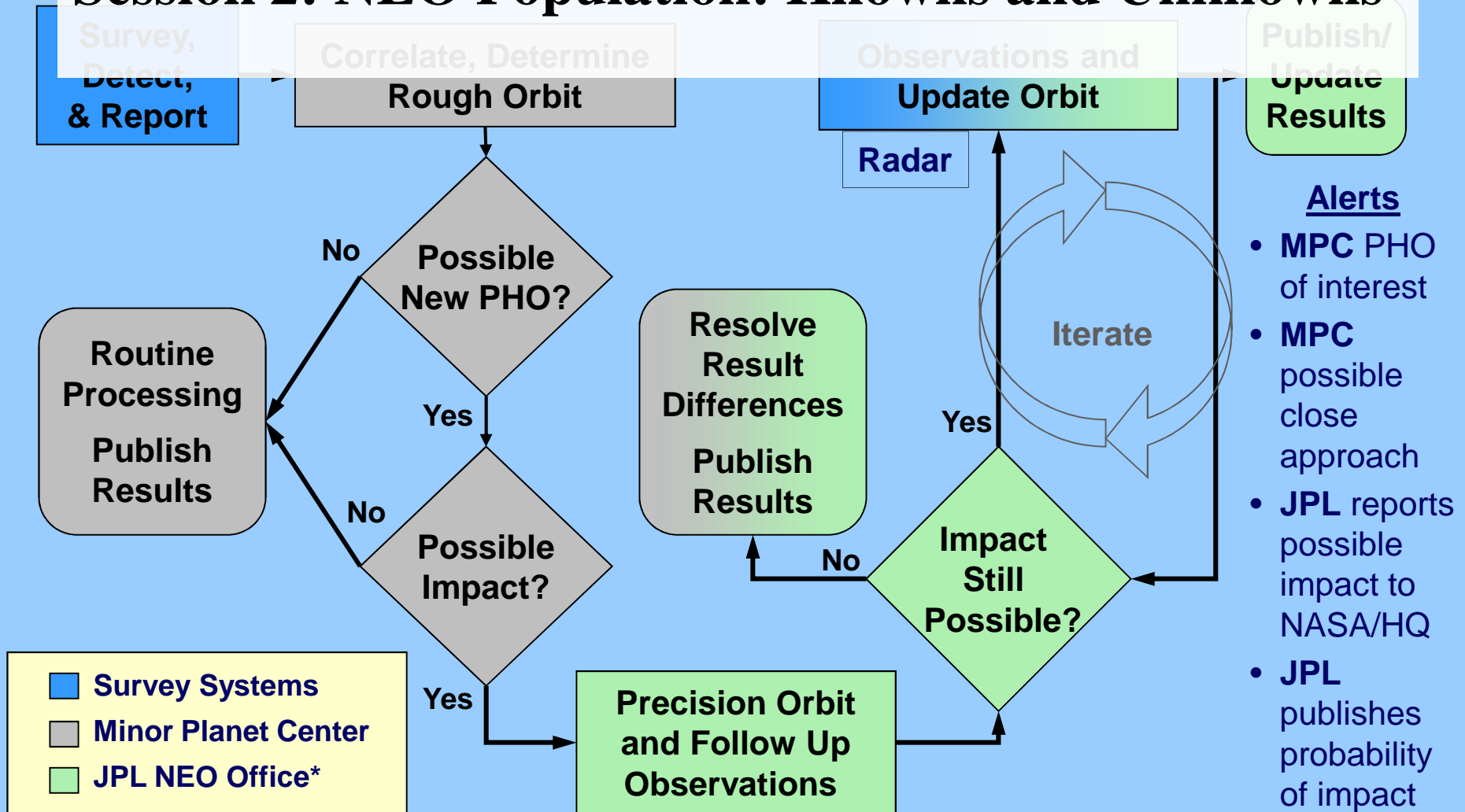


# Spaceguard Survey Catalog Program

## Current Spaceguard Survey Infrastructure and Process



### Session 2: NEO Population: Knowns and Unknowns



\* In parallel with NEODyS



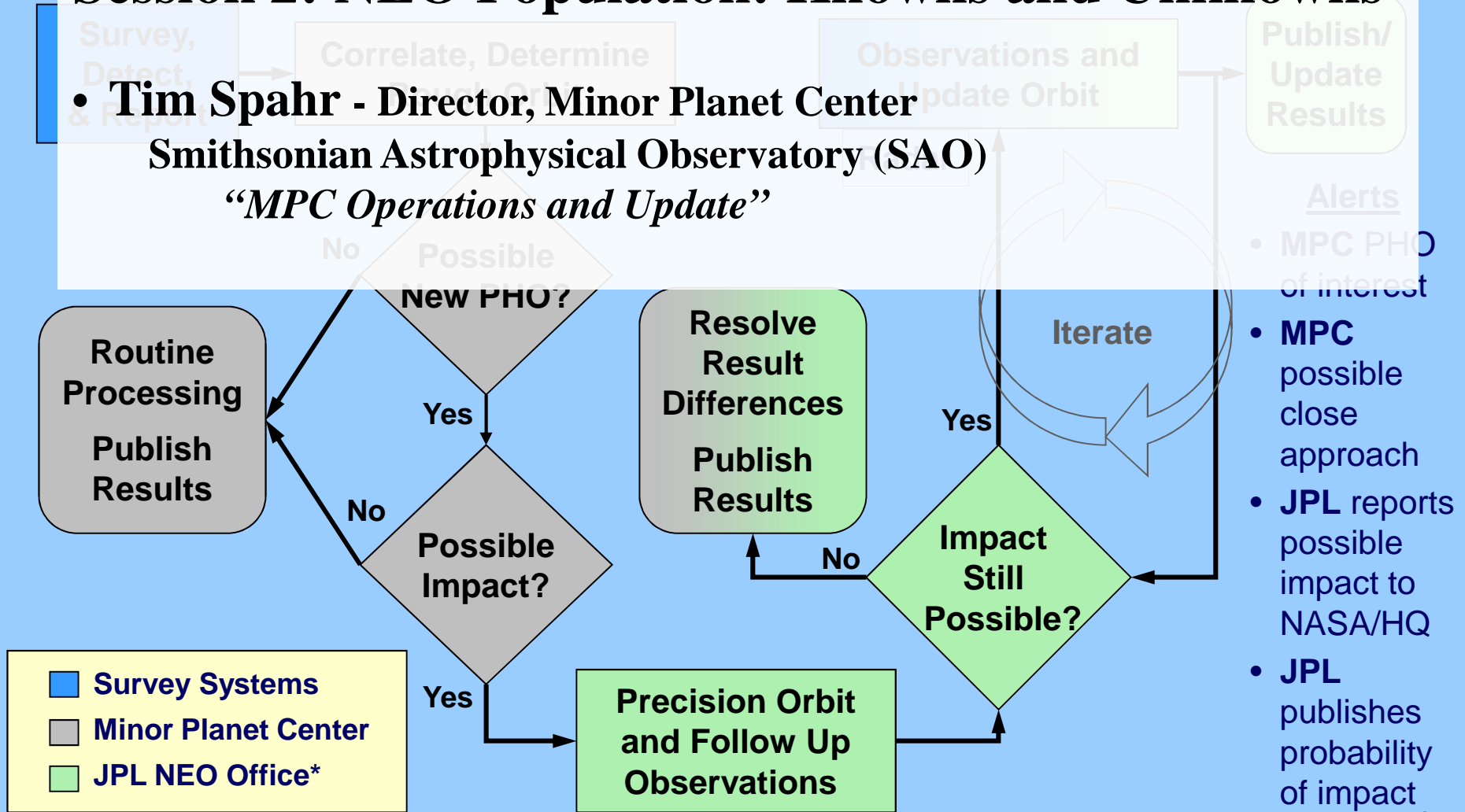
# Spaceguard Survey Catalog Program

## Current Spaceguard Survey Infrastructure and Process



### Session 2: NEO Population: Knowns and Unknowns

- **Tim Spahr - Director, Minor Planet Center**  
Smithsonian Astrophysical Observatory (SAO)  
“MPC Operations and Update”



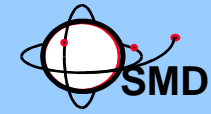
- Alerts
- MPC PHO of interest
  - **MPC** possible close approach
  - **JPL** reports possible impact to NASA/HQ
  - **JPL** publishes probability of impact

\* In parallel with NEODyS



# Spaceguard Survey Catalog Program

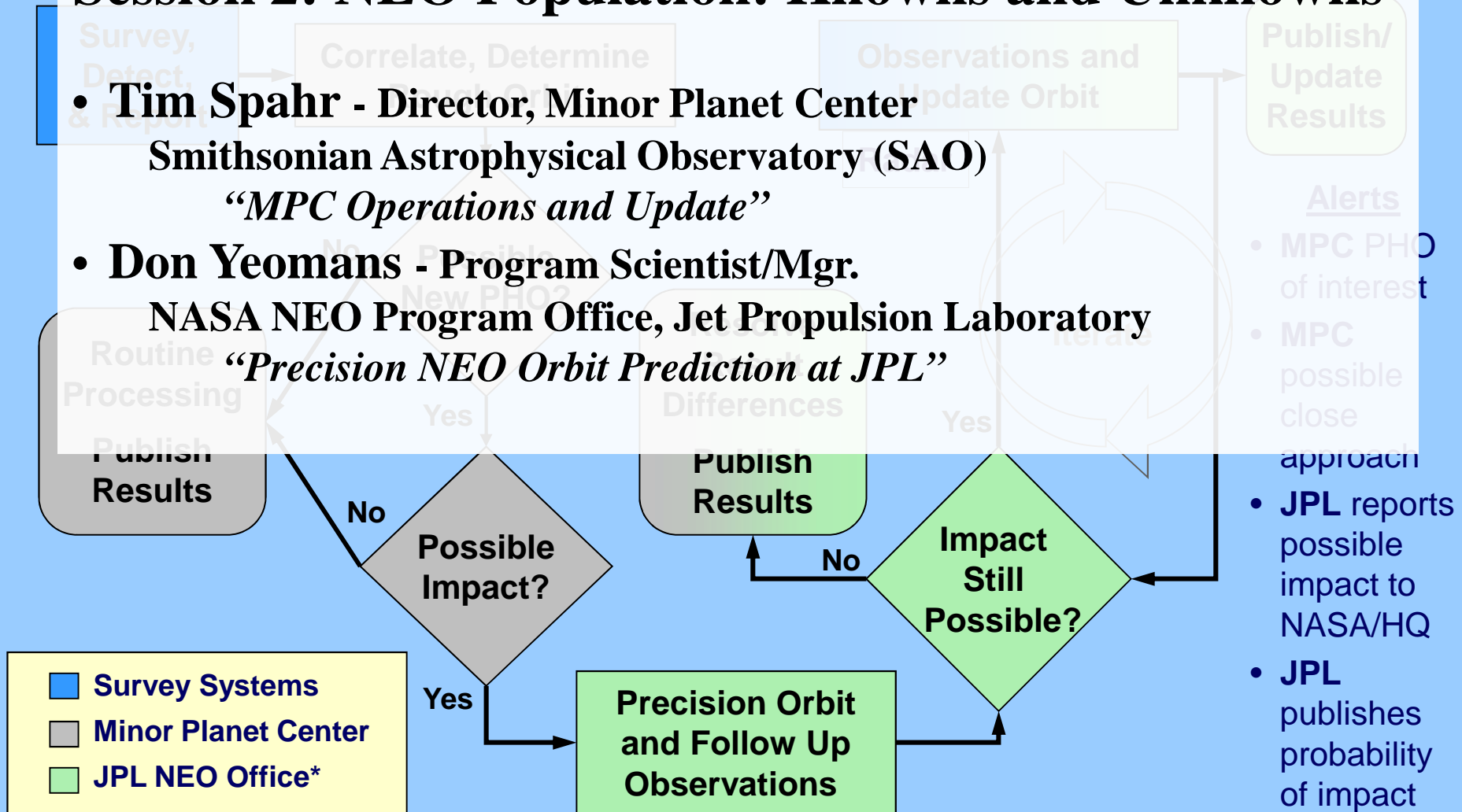
## Current Spaceguard Survey Infrastructure and Process



### Session 2: NEO Population: Knowns and Unknowns

- **Tim Spahr - Director, Minor Planet Center**  
Smithsonian Astrophysical Observatory (SAO)  
“MPC Operations and Update”

- **Don Yeomans - Program Scientist/Mgr.**  
NASA NEO Program Office, Jet Propulsion Laboratory  
“Precision NEO Orbit Prediction at JPL”



\* In parallel with NEODyS



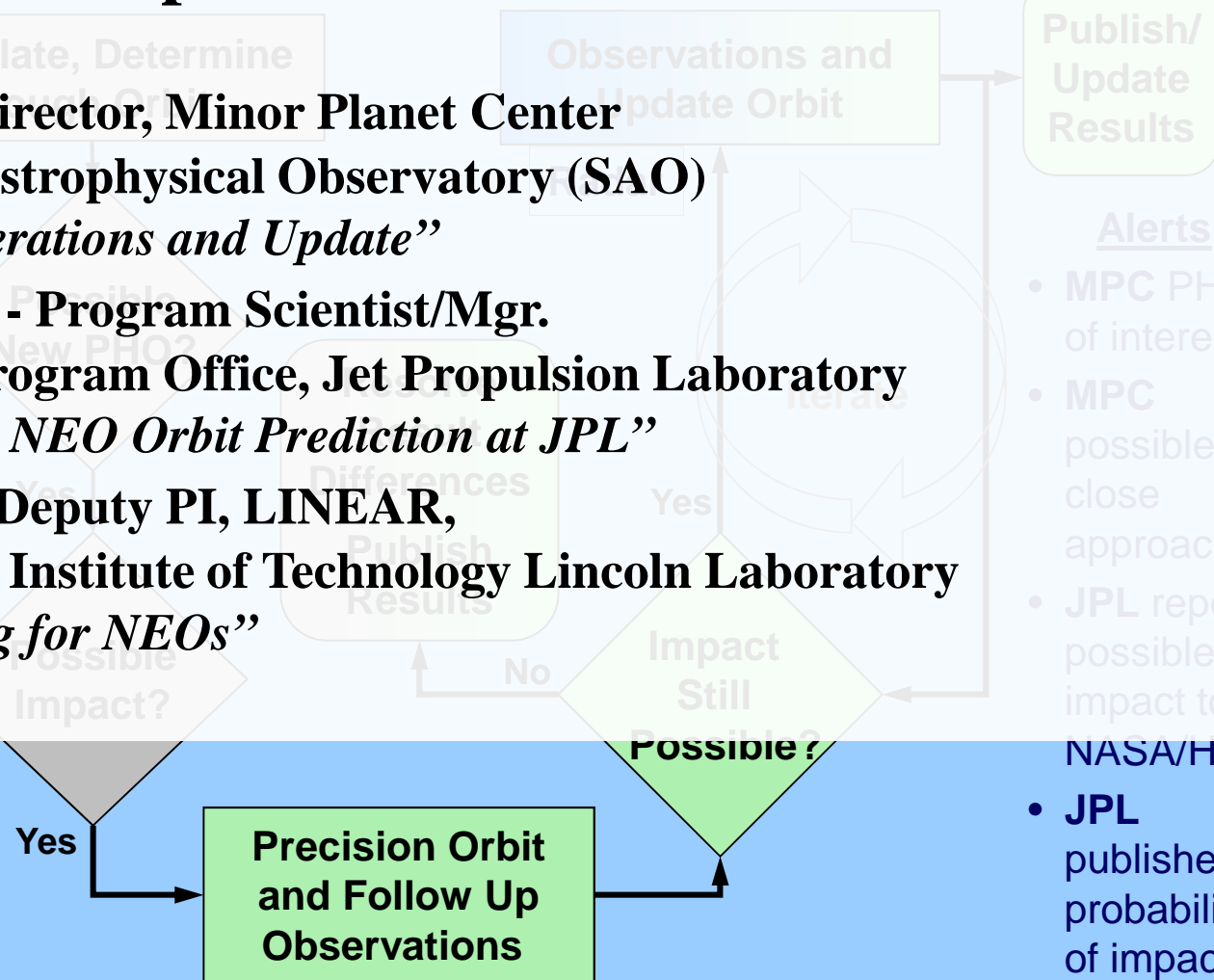
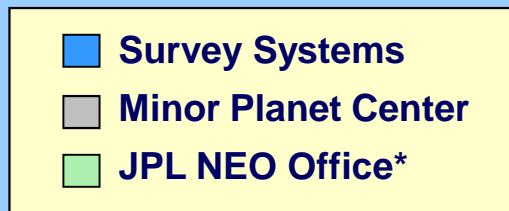
# Spaceguard Survey Catalog Program

## Current Spaceguard Survey Infrastructure and Process



### Session 2: NEO Population: Knowns and Unknowns

- **Tim Spahr - Director, Minor Planet Center**  
Smithsonian Astrophysical Observatory (SAO)  
*“MPC Operations and Update”*
- **Don Yeomans - Program Scientist/Mgr.**  
NASA NEO Program Office, Jet Propulsion Laboratory  
*“Precision NEO Orbit Prediction at JPL”*
- **Scott Stuart - Deputy PI, LINEAR,**  
Massachusetts Institute of Technology Lincoln Laboratory  
*“Searching for NEOs”*



\* In parallel with NEODyS



# Spaceguard Survey Catalog Program

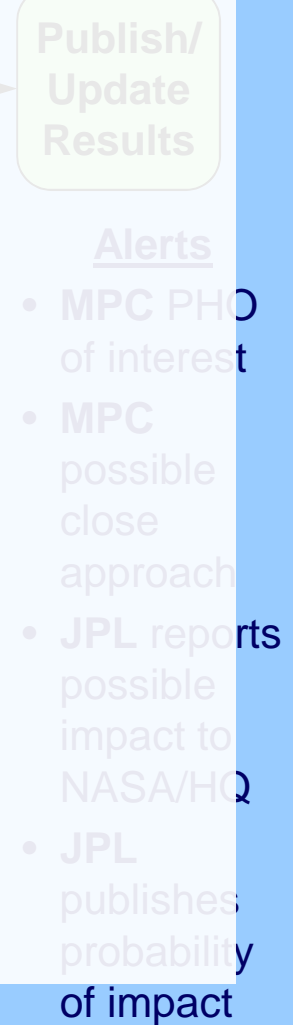
## Current Spaceguard Survey Infrastructure and Process



### Session 2: NEO Population: Knowns and Unknowns

- **Tim Spahr - Director, Minor Planet Center**  
Smithsonian Astrophysical Observatory (SAO)  
*“MPC Operations and Update”*
- **Don Yeomans - Program Scientist/Mgr.**  
NASA NEO Program Office, Jet Propulsion Laboratory  
*“Precision NEO Orbit Prediction at JPL”*
- **Scott Stuart - Deputy PI, LINEAR,**  
Massachusetts Institute of Technology Lincoln Laboratory  
*“Searching for NEOs”*
- **Amy Mainzer – WISE Deputy Project Scientist**  
Jet Propulsion Laboratory;  
*“Space-based NEO Detection and Tracking, NEOWISE”*

- Survey System
- Minor Planet Center
- JPL NEO Office\*



\* In parallel with NEODyS



# Spaceguard Survey Catalog Program

## Current Spaceguard Survey Infrastructure and Process



### Session 2: NEO Population: Knowns and Unknowns

- **Tim Spahr** - Director, Minor Planet Center  
Smithsonian Astrophysical Observatory (SAO)  
*“MPC Operations and Update”*
- **Don Yeomans** - Program Scientist/Mgr.  
NASA NEO Program Office, Jet Propulsion Laboratory  
*“Precision NEO Orbit Prediction at JPL”*
- **Scott Stuart** - Deputy PI, LINEAR,  
Massachusetts Institute of Technology Lincoln Laboratory  
*“Searching for NEOs”*
- **Amy Mainzer** – WISE Deputy Project Scientist  
Jet Propulsion Laboratory  
*“Space-based NEO Detection and Tracking, NEOWISE”*
- **Al Harris** - Consultant, MoreData! Inc  
JPL NEO Office\*  
*“NEO Population Estimates”*

\* In parallel with NEODyS

